



SuperSystems
incorporated

eFlo 2.0 GAUGE DISPLAY KIT (P/N 13748) INSTALLATION INSTRUCTIONS



Super Systems Inc.
7205 Edington Drive
Cincinnati, OH 45249
513-772-0060
Fax: 513-772-9466
www.supersystems.com

Super Systems Inc.

USA Office

Corporate Headquarters:

7205 Edington Drive

Shipping Address:

7245 Edington Drive

Cincinnati, OH 45249

Phone: (513) 772-0060

<http://www.supersystems.com>

Super Systems Europe

Unit E, Tyburn Trading Estate,
Ashold Farm Road, Birmingham
B249QG

UNITED KINGDOM

Phone: +44 (0) 121 306 5180

<http://www.supersystemseurope.com>

Super Systems México

Sistemas Superiores Integrales S de RL de CV
Acceso IV No. 31 Int. H Parque Industrial
Benito Juarez

C.P. 76120 Queretaro, Qro.

Phone: +52 442 210 2459

<http://www.supersystems.com.mx>

Super Systems China

No. 369 XianXia Road
Room 703
Shanghai, CHINA
200336

Phone: +86 21 5206 5701/2

<http://www.supersystems.cn>

Super Systems India Pvt. Ltd.

A-26 Mezzanine Floor, FIEE Complex,
Okhla Indl. Area, Phase - 2
New Delhi, India 110 020

Phone: +91 11 41050097

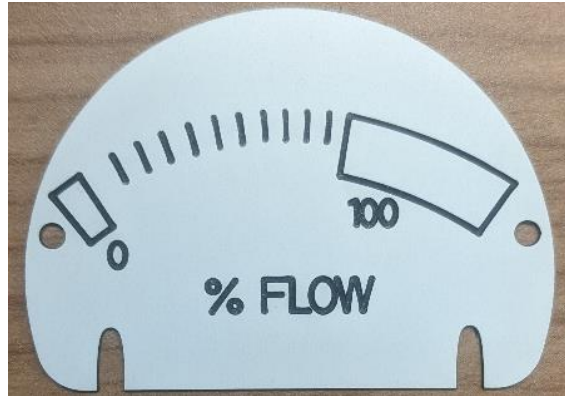
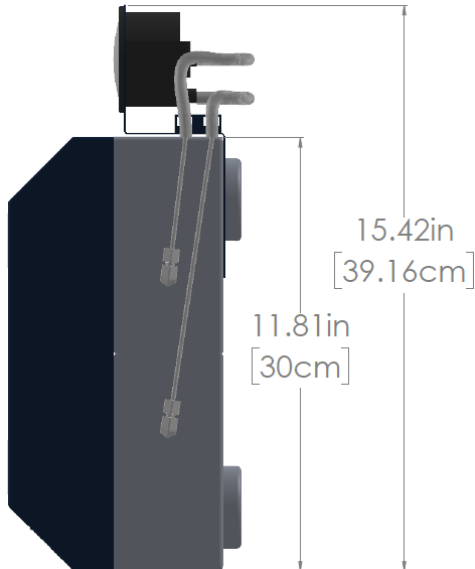
<http://www.supersystemsindia.com>

Table of Contents

Introduction.....	4
Warnings.....	4
Included Components.....	4
Components Not Included.....	4
Preparing for Installation.....	4
Installing the Assembly.....	5
Verifying the Assembly function.....	8
Warranty.....	9
Revision History.....	10

Introduction

Thank you for selecting Super Systems Inc. as your source for accurate flow measuring equipment. This Gauge Display Kit mounts onto an eFlo 2.0 flow meter, indicating flow pressure in the event of a loss of power (or any situation where a verification of flow is required).



Warnings

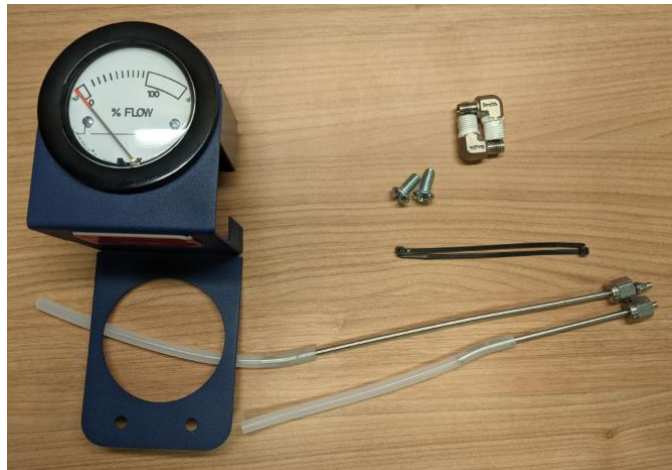
Failure to comply with these instructions may cause damage to the unit that will not be covered under the warranty. Super Systems Inc. is not responsible for damage to this unit caused by disregard of these instructions, neglect, or misuse. If you have any questions or concerns, please call us to discuss them.

Included Components

- 1 Gauge Adapter Assembly
- 2 Fittings
- 2 Steel/Silicone Tube Assemblies
- 2 Zip-Ties
- 1 Installation Manual
- 1/4-20 screws (2)

Components Not Included

- 3/16" Allen Wrench
- Adjustable Wrench
- Phillips Screwdriver



Preparing for Installation

Carefully unpack the enclosed materials. If there are any signs of shipping damage, notify SSi immediately.

NOTE: For eFlo 2.0 units already part of an existing installation, ensure that gas pressure is off, and completely remove the meter from the system before proceeding.

Installing the Assembly

NOTE: These instructions assume a top-mount. If mounting the Assembly on the bottom of an eFlo 2.0 unit, some steps will differ. Please call SSI at 513-772-0060 for assistance.

1. Carefully remove cover from tape and firmly press Gauge Adapter Assembly to top of eFlo unit. Ensure that mounting holes on back are aligned.

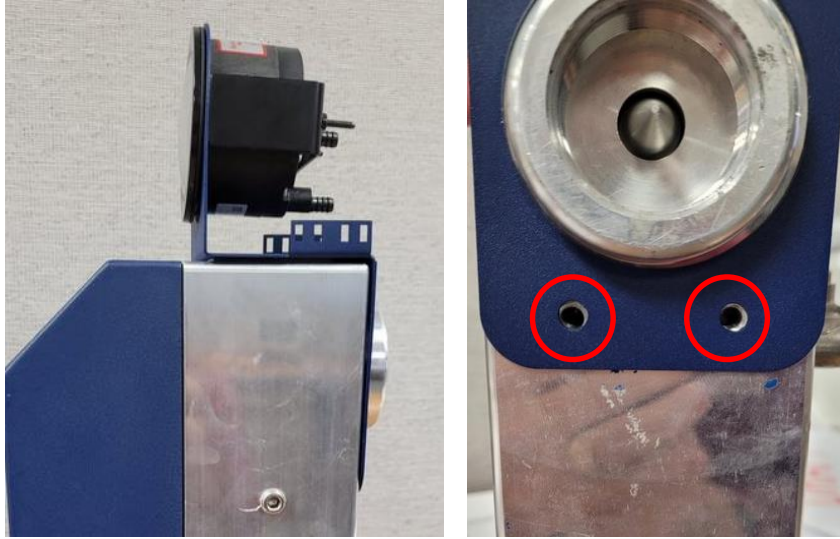


Figure 1 Assembly on top of unit with mounting holes aligned

2. Secure Gauge Adapter Assembly to eFlo unit using phillips screwdriver (not included) & 2 1/4-20 screws. **NOTE:** if the unit is a panel mount, this step may not be possible at this time.



Figure 2 Screws installed

3. Remove both 1/8" plugs from the side of the flow meter using a 3/16" allen wrench (not included).

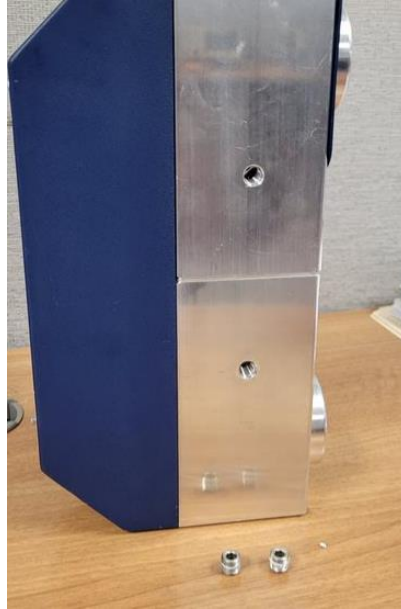


Figure 3 Plugs removed

4. Insert fittings into same location. Tighten until finger tight, then use a adjustable wrench (not included) to tighten two more revolutions. **NOTE:** Use images for a guide to the desired angle of the fittings.

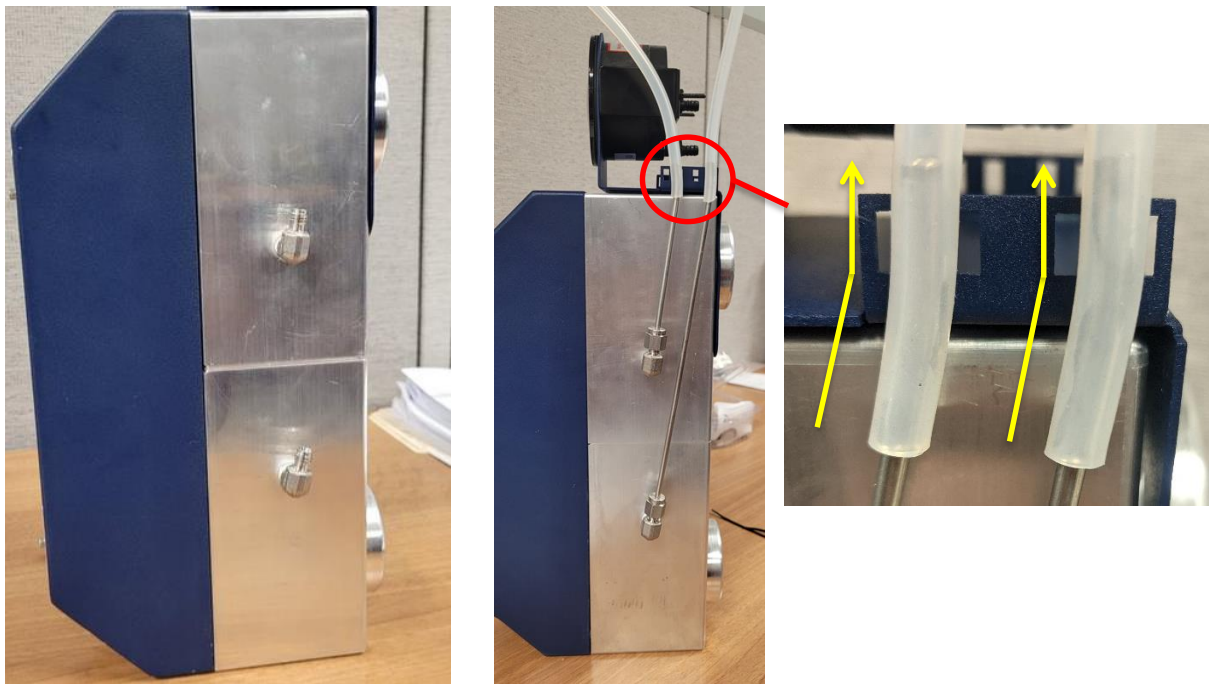


Figure 4 Fittings at correct angle & guide for final position of tubing

- When aligned, attach short Steel/Silicone Tube Assembly to top compression fitting and long Steel/Silicone Tube Assembly to bottom compression fitting. Tighten until finger tight, then use a wrench to complete an additional revolution, making sure that the tubing's final position matches Figure 4 above. **NOTE:** Bend in stainless steel tubing is intended to straighten alignment with adapter plate for mounting zipties in the following step.
- Secure tubing to adapter plate with Zip-Ties. Trim as needed.

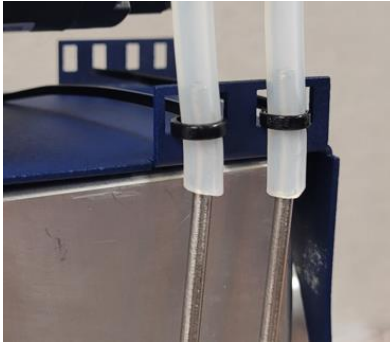


Figure 5 Zip ties

- Attach silicone tubing to pressure gauge as shown below (note +/- labels).

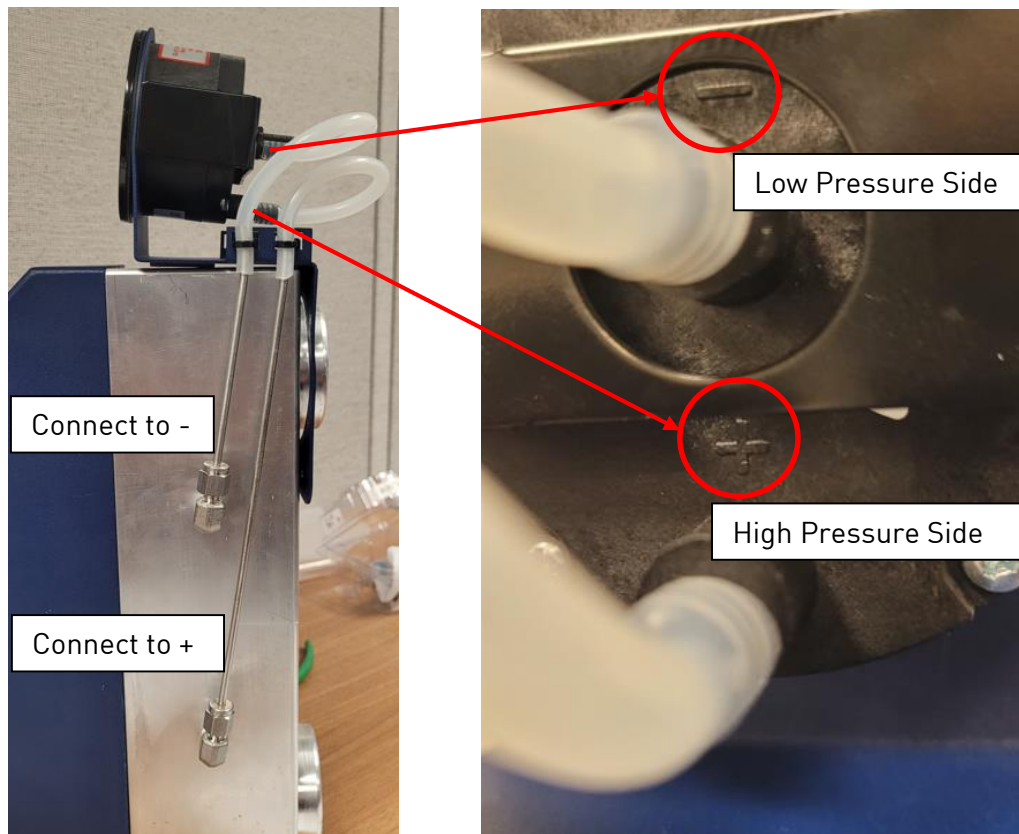


Figure 6 Connecting silicone tubing

Verifying the Assembly function.

Reinstall the meter.

Reopen flow and confirm that adapter & eFlo 2.0 are functioning correctly. If not, review instructions above, and if necessary, contact SSi at 513-772-0060 for assistance.

Warranty

Limited Warranty for Super Systems Products:

The Limited Warranty applies to new Super Systems Inc. (SSI) products purchased direct from SSI or from an authorized SSI dealer by the original purchaser for normal use. SSI warrants that a covered product is free from defects in materials and workmanship, with the exceptions stated below.

The limited warranty does not cover damage resulting from commercial use, misuse, accident, modification or alteration to hardware or software, tampering, unsuitable physical or operating environment beyond product specifications, improper maintenance, or failure caused by a product for which SSI is not responsible. There is no warranty of uninterrupted or error-free operation. There is no warranty for loss of data—you must regularly back up the data stored on your product to a separate storage product. There is no warranty for product with removed or altered identification labels. SSI DOES NOT PROVIDE ANY OTHER WARRANTIES OF ANY KIND, INCLUDING, BUT NOT LIMITED TO, THE IMPLIED WARRANTIES OR CONDITIONS OF MERCHANTABILITY AND FITNESS FOR A PARTICULAR PURPOSE. SOME JURISDICTIONS DO NOT ALLOW THE LIMITATION OF IMPLIED WARRANTIES, SO THIS LIMITATION MAY NOT APPLY TO YOU. SSI is not responsible for returning to you product which is not covered by this limited warranty.

If you are having trouble with a product, before seeking limited warranty service, first follow the troubleshooting procedures that SSI or your authorized SSI dealer provides.

SSI will replace the PRODUCT with a functionally equivalent replacement product, transportation prepaid after PRODUCT has been returned to SSI for testing and evaluation. SSI may replace your product with a product that was previously used, repaired and tested to meet SSI specifications. You receive title to the replaced product at delivery to carrier at SSI shipping point. You are responsible for importation of the replaced product, if applicable. SSI will not return the original product to you; therefore, you are responsible for moving data to another media before returning to SSI, if applicable. Data Recovery is not covered under this warranty and is not part of the warranty returns process. SSI warrants that the replaced products are covered for the remainder of the original product warranty or 90 days, whichever is greater.

Revision History

Rev.	Description	Date	MCO#
-	First Release	11/10/21	2316